

**smart**  
architectural aluminium





# Smart Systems

## The Company

Smart Architectural Aluminium is renowned in the fenestration industry for its ethos of quality in design and development. Our expertise and reputation is built from over 30 years experience in designing and supplying quality assured aluminium profile systems to the window and door industry. It is this experience and reputation for excellence that has made Smart Architectural Aluminium the UK's leading supplier of aluminium window and door systems.

Located in Yatton, North Somerset, at a purpose built 15,000sq/m offices and manufacturing plant the company has an annual turnover in excess of £30 million and employs over 100 people. In 2009 Smarts will complete development work on a further 15,000sq/m state of the art aluminium extrusion press and paint plant, the first to be built in the UK in over ten years.

As part of the international Corialis Group, Smarts are able to draw upon expertise from aluminium system companies in Belgium, France, Poland and China. Established in 1984 with its headquarters in Lokeren, Belgium, the Corialis Group has an annual turnover in excess of £250 million and employs 1300 people worldwide.

Smart Architectural Aluminium is committed to working towards a sustainable working environment, and to ensuring that every aspect of our activities is conducted in accordance with sound environmental practices.



## The Product Range

The company has an extensive range of products which are held in bar lengths and are available ex-stock. The product range includes casement windows that are externally or internally beaded, open-in/open-out; other windows with various opening facilities i.e. tilt/turn, projecting, fully reversible, pivot, sliding and heavy duty; doors that are commercial hinged, commercial swing, patio, slide folding, multi-track slide and automatic; glazed screen/shopfront; curtain walling; roof glazing and conservatories. The products are available as thermal break or non-thermal break aluminium and aluminium/PVC-U composite. There is also a specifically designed thermally broken direct replacement for steel windows. It incorporates slim sightlines and an appearance inspired by the traditional old style steel window. It is ideal for listed buildings and replica refurbishment projects where planning constraints are to be considered.

## Website

For further information about our company, comprehensive product range and manufacturing facilities please visit our website at:

[www.smartsystems.co.uk](http://www.smartsystems.co.uk)

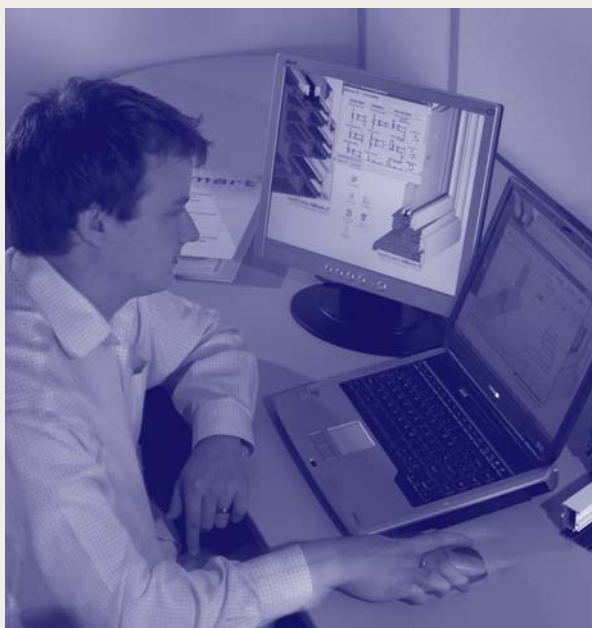


# Smart Thinking For Today's Markets

## Design Expertise

Our team of technically competent designers use current CAD technology to produce innovative design solutions for specific markets.

Comprehensive technical manuals and data sheets giving full details of each system, including sections, components, drawings and fabrication details are available.



## Assurance of Quality

Smart Systems is committed to high standards of quality and workmanship. In our view quality implies consistency, reliability and durability in terms of materials, product performance and service; quality equates with risk reduction – not just for our company but also for all our customers. It is for these reasons that we fully support independent certification and assessment schemes run by the BSI and BBA.

## The Markets

Smart Systems offer a range of purpose designed products suitable for new buildings or refurbishment projects in the **architectural, commercial, public, new build and retail markets.**

## Technical Sales

Our highly experienced team of Technical Sales personnel are available to assist and work closely with architects, specifiers, fabricators and installers on projects from inception of design through to fabrication and installation.

## Training Facilities

The company has a designated workshop/training facility where product training is offered to its fabricators and other relevant individuals engaged within the industry. Smart Systems currently offer training courses to NVQ Standards.

## National Distribution Service

Smart Systems has a national distribution service with its own dedicated transport fleet of lorries making daily deliveries to its network of reputable fabricators and installers throughout the United Kingdom.

Smart Systems are BS EN ISO 9001:2000 registered.



MEMBERS OF  
CWCT





# Smart Systems

## Environmental Policy

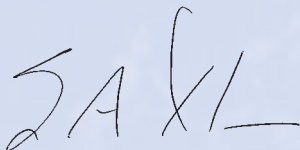
Smart Systems are committed to working towards a greener working environment and to ensuring that every aspect of our activities is conducted in accordance with sound environmental practices.

We plan to achieve this by:

- Minimising the consumption of natural resources and energy, whilst consuming material goods in moderation. We are resolved to use aluminium billets containing 30% re-cycled aluminium in our extrusion presses. Globally this will assist in reducing the demand for energy as the recycling process for aluminium requires only 5% of the energy necessary to create primary aluminium
- Reducing the creation of waste through the adoption of improved operating practices and by the recycling of materials whenever practical. By bringing our entire production all under one roof and by investing in on-site extrusion, painting and rolling facilities we aim to reduce the journeys our transport fleet make by 500,000 miles per year. We have instigated company wide recycling initiatives for all waste paper, cans and plastic
- Investing in the development of new products and modern processes/production facilities that have an improved performance regarding their impact on the environment. This means using the most efficient technology available thus enabling us to reduce wastage and cut out harmful industrial emissions
- Making sure that all waste and effluent is disposed of in a safe and responsible manner
- Ensuring that our company complies with environmental legislation
- Monitoring our progress towards the achievement of our aims for a greener working environment

Our objective is to promote among our staff, customers, suppliers and stakeholders an understanding of environmental issues in the context of our business. Our common task is to ensure that we continually improve the environmental impact of our total global activities.

This policy is recognition, by the company, of its responsibility towards safeguarding the environment and we publish this statement as a commitment by both management and employees to minimising the environmental impact of its operations.



E. Robinson  
Managing Director

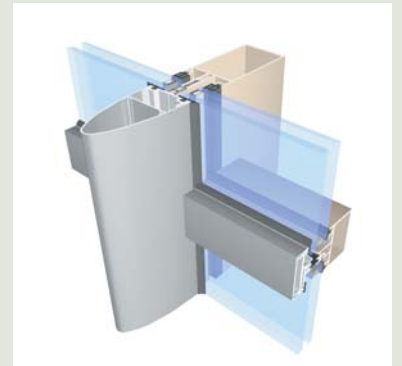


The **MC Wall** is a curtain wall system designed to create a dramatic but practical façade, with the option of sloped and facet-shaped glazing whilst allowing maximum light into small or large multi-storey buildings. Rapid on-site installation and concealed transoms, for seamless/uninterrupted glass to glass joints, are among the many special features of this versatile polyamide thermal break system. The system incorporates a top hung frameless vent and also accommodates all Smarts windows, doors and horizontal sliders.

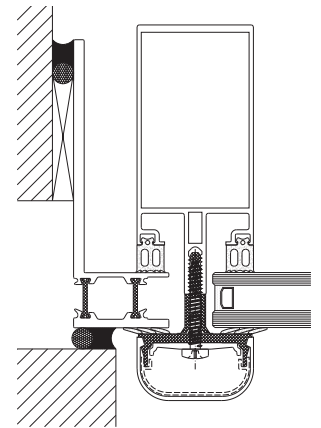


# CURTAIN WALL

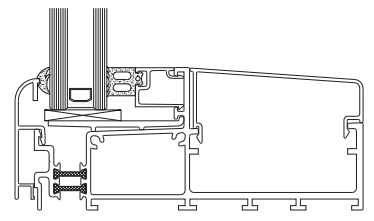
## MC Wall



Horizontal Section



Vertical Section



<b>Trade Name</b>	<b>MC Wall</b>
<b>Building applications</b>	Suitable for small and large multi-storey office buildings. Mullion and transom depths to suit design construction and structural requirements. Sloped glazing possible, straight and slightly facet-shaped vertical glass walls
<b>Special features</b>	Rapid on-site installation using stainless steel pin joints to connect transoms to mullions. Transom profiles have dedicated polyamide thermal break. Concealed transoms thereby giving glass to glass joints
<b>Materials</b>	Aluminium alloy 6060/6063 T5/T6 in condition F22 to NBN P21-001 and DIN 1725 Co-extruded profiles to DIN 7863, TV 110 NFP 85301, ISO 3994 Thermal break: polyamide strips PA 6.6. 25% reinforced with glass fibre Seals: EPDM to DIN 7863, TV 110 NFP 85301, ISO 3994
<b>Finish</b>	Polyester powder coat to BS 6496/APA-Qualicoat Guidelines. Anodised satin or bronze colours with EWAA/EURAS-Qualinod quality label. Dual colour available
<b>Profile width</b>	55mm
<b>Depth of frame</b>	79mm – 250mm
<b>Glass</b>	Glazing options from 24mm to 33mm and single glazing
<b>Sash inserts</b>	MC Wall top hung frameless vent. Accommodates all Smarts windows, doors and horizontal sliders.
<b>Weather performance</b>	Tests conducted in accordance with STS 52.0. Complies with Doc. L for thermal transmittance. Passed CWCT standard. Test Report available on request





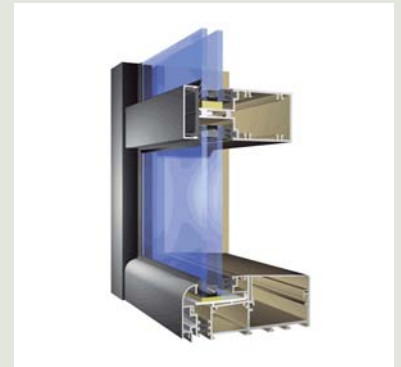
SC Frame is a curtain wall system designed to provide optimum thermal performance and rapid on-site installation, facilitated by the ladder frame method of construction, i.e. pre-assembled in sections during fabrication. SC Frame is suitable for use in low to medium rise facades, such as large shop fronts and showrooms where the application demands an attractive glazing system that delivers maximum glass area and ingress of light. The system will accommodate a wide range of Smarts windows and entrance doors.



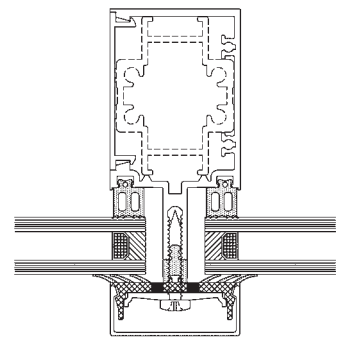


# CURTAIN WALL

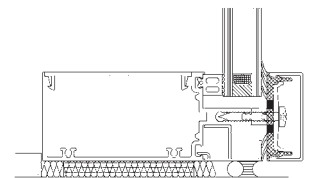
## SC Frame



Horizontal Section



Vertical Section



<b>Trade Name</b>	<b>SC Frame</b>
<b>Building applications</b>	Suitable for low to medium rise façades including large shopfronts and showrooms, where ease of installing large panes of glass is a pre-requisite.
<b>Special features</b>	Constructed in ladder frames in the factory allowing rapid on-site installation. Stainless steel self-tapping screws are used through the mullion into integral cores within the transom or a cleating method can be used for manufacture.
<b>Materials</b>	Aluminium alloy 6060/6063 T5/T6 in condition F22 to NBN P21-001 and DIN 1725 Thermal break and seals: EPDM to DIN 7863, TV 110 NFP 85301, ISO 3994
<b>Finish</b>	Polyester powder coat to BS 6496/APA-Qualicoat Guidelines. Anodised satin or bronze colours with EWAA/EURAS-Qualinod quality label Dual colour available
<b>Profile width</b>	55mm
<b>Depth of frame</b>	75mm, 100mm and 125mm
<b>Glass</b>	Single glazing 6mm, 10mm and 12mm and double glazing 24mm, 28mm and 32mm
<b>Sash inserts</b>	Accommodates Smarts Intruder, Alitherm, Visoline and Slide Windows and Doors.
<b>Performance</b>	Complies with Doc. L for thermal transmittance





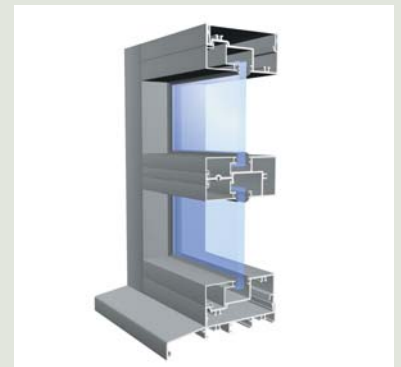
Our Shopfront system Shopline is specifically designed for all ground floor treatments and severe duty doors. It is stylish, practical and accommodates all Smarts windows and horizontal sliders. It offers various sightline options to the head, midrail and cill detail as well as anti finger-trap stiles and concealed transom closers.

The versatility of the system is amply demonstrated by the variety of installations depicted in this brochure. Designed to be robust, our shopfront system will withstand heavy traffic in commercial buildings such as high street shops/store, office buildings, health clubs and many others.

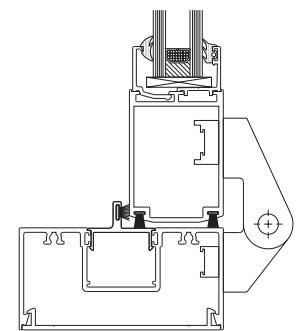


# SHOP FRONT

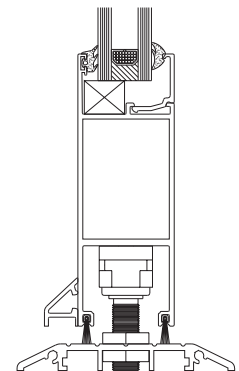
## Shopline



Horizontal Section



Vertical Section



<b>Trade Name</b>	<b>Shopline</b>
<b>Building applications</b>	Designed for all ground floor treatments and severe duty doors
<b>Special features</b>	Various sightline options to head, midrail and cill detail. Anti finger-trap stiles and concealed transom closers. Doc. M compliant thresholds
<b>Materials</b>	Aluminium alloy 6060/6063 T5/T6 in condition F22 to NBN P21-001 and DIN 1725 Seals: EPDM to DIN 7863, TV 110 NFP 85301, ISO 3994
<b>Finish</b>	Polyester powder coat to BS 6496/APA-Qualicoat Guidelines. Anodised satin or bronze colours with EWAA/EURAS-Qualinod quality label
<b>Profile width</b>	50mm
<b>Depth of frame</b>	100mm
<b>Glass</b>	Single glazing profiles accommodate 6mm - 12mm glass Double glazing profiles accommodate 24mm - 28mm glass
<b>Sash inserts</b>	Accommodates all Smarts windows and horizontal sliders.
<b>Performance</b>	Complies with Doc. L for thermal transmittance





This system was specifically designed as a thermally broken direct replacement for steel windows. It incorporates slim sightlines and an appearance inspired by the traditional old style steel window. It is ideal for listed buildings and replica refurbishment projects where planning constraints are to be considered.

The Evolution system is designed to be built as a series of horizontal modules which can be stacked using horizontal couplers and provides an ideal solution where there is a requirement for a prestigious and thermally advanced window system.

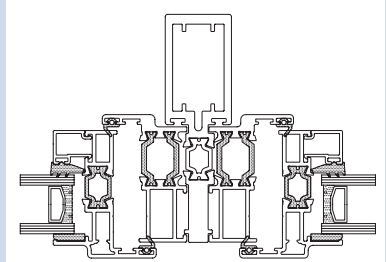


# WINDOWS

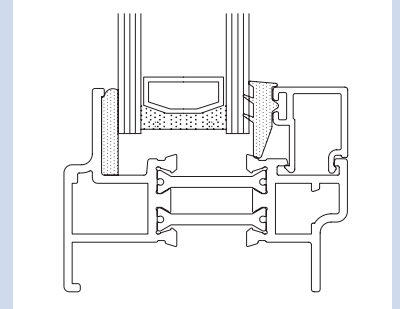
## Evolution



Horizontal Section



Vertical Section



<b>Trade Name</b>	<b>Evolution</b>
<b>Building applications</b>	Designed as a thermally broken replacement for old steel windows and for use as fixed lights and open out windows. It is an internally beaded tape glazed system suitable for both commercial and domestic applications.
<b>Special features</b>	System designed to be built as a series of horizontal modules which can be stacked using horizontal couplers. Designed for high thermal efficiency using slimline profiles. Chamfered or square main profile options. High security glazing and shoot-bolt locking options. Ideal for listed buildings and replica refurbishment projects
<b>Materials</b>	Aluminium alloy 6060/6063 T5/T6 in condition F22 to NBN P21-001 and DIN 1725. Complies with BS EN 12020-2: 2001/BS 755-9: 2001  Thermal break: polyamide strips PA 6.6. 25% reinforced with glass fibre  Seals: EPDM to DIN 7863, TV 110 NFP 85301, ISO 3994
<b>Finish</b>	Polyester powder coat to BS 6496/APA-Qualicoat Guidelines. Anodised satin or bronze colours with EWAA/EURAS-Qualinod quality label Dual colour available
<b>Profile width</b>	Various options depending on design considerations
<b>Depth of frame</b>	47mm
<b>Glass</b>	24 mm glazing
<b>Sash inserts</b>	Top or side hung opening options
<b>Performance</b>	Weather tested in accordance with BS6375 Pts 1 & 2 Complies with Doc. L for thermal transmittance





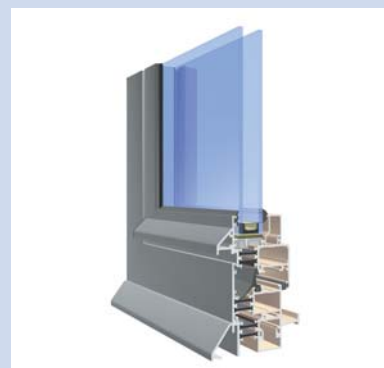
Innovative designs and a comprehensive range of windows suitable for the architectural, commercial, public, new build and retail markets are hallmarks of Smart Systems.

Our window ranges include casements (top/side hung, fixed lights and any combination of these), tilt and turn, hopper, tilt and slide, projecting, fully reversible, pivot (horizontal or vertical), sliding and heavy duty. Windows are available externally or internally beaded, open-in/open-out, with polyamide thermal barrier or as an aluminium/PVC-U composite frame for high performance thermal efficiency. High security glazing, shoot-bolt locking, dual colour options, excellent weather performance (BS6375 Pts 1 & 2), compliance with BS7950 and a choice of ovolo, chamfered or square main profiles are just some of the many special features of our window systems.

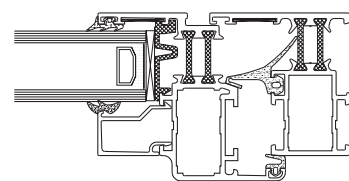


# WINDOWS

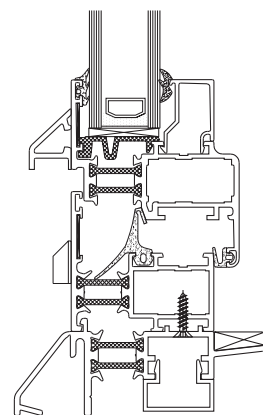
## Visoline



Horizontal Section



Vertical Section



### Trade Name

## Visoline

### Building applications

Designed for use as fixed lights, tilt and turn, single or double sash, side hung (open in/out), tilt in, side or top hung (open out), horizontal or vertical pivot and tilt and slide windows. All options are internally beaded for use on domestic and all commercial applications

### Special features

All applications are internally glazed with square or round edge beads  
Polyamide thermal break allowing dual colour option  
Profiles span full height i.e. floor to ceiling

### Materials

Aluminium alloy 6060/6063 T5/T6 in condition F22 to NBN P21-001 and DIN 1725

Thermal break: polyamide strips PA 6.6. 25% reinforced with glass fibre

Seals: EPDM to DIN 7863, TV 110 NFP 85301, ISO 3994

### Finish

Polyester powder coat to BS 6496/APA-Qualicoat Guidelines. Anodised satin or bronze colours with EWAA/EURAS-Qualinod quality label  
Dual colour available

### Profile width

Various options depending on design considerations

### Depth of frame

51mm

### Glass

Glazing options from 4mm to 38mm

### Sash inserts

See "Building Applications" above

### Performance

Weather tested in accordance with BS6375 Pts 1  
Security tested to BS7950  
Tested to NEN-norm 5096. Security tested by SKG  
Complies with Doc. L for thermal transmittance  
Test Reports are available on request





Our range of windows are compatible with a range of accessories, locking mechanisms and are available in a wide range of colours and finishes that comply with all relevant British and/or European standards. Compliance with Document L for thermal transmittance applies.

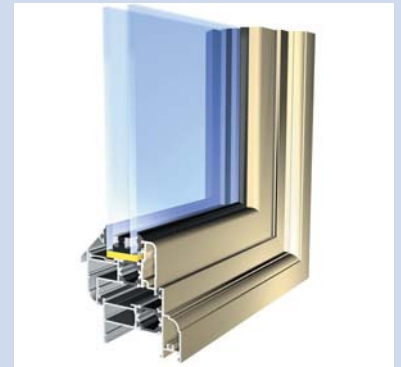
Smart's window systems offer excellent weather performance/ratings in accordance with the requirements of British Standards. BSI test certificates and BSI Kitemark test reports, where applicable, are available on request.



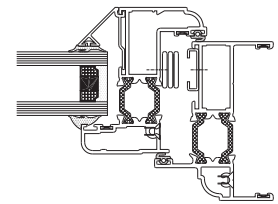


# WINDOWS

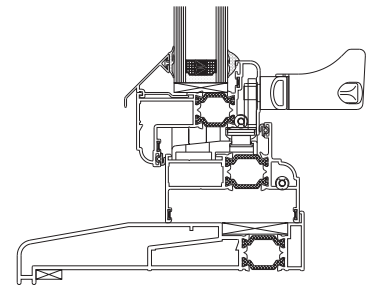
## Alitherm



Horizontal Section



Vertical Section



<b>Trade Name</b>	<b>Alitherm</b>
<b>Building applications</b>	Designed for use as fixed lights and open out windows, internally or externally beaded for domestic and light/medium commercial applications.
<b>Special features</b>	Designed for high thermal efficiency using slimline profiles Ovolo, chamfered or square main profile options High security glazing and shoot-bolt locking options
<b>Materials</b>	Aluminium alloy 6060/6063 T5/T6 in condition F22 to NBN P21-001 and DIN 1725 Thermal break: polyamide strips PA 6.6. 25% reinforced with glass fibre Seals: EPDM to DIN 7863, TV 110 NFP 85301, ISO 3994
<b>Finish</b>	Polyester powder coat to BS 6496/APA-Qualicoat Guidelines. Anodised satin or bronze colours with EWAA/EURAS-Qualinod quality label Dual colour available
<b>Profile width</b>	Various options depending on design considerations
<b>Depth of frame</b>	47mm, 55mm and 70mm
<b>Glass</b>	Glazing options 24mm, 28mm and 32mm
<b>Sash inserts</b>	Top or side hung opening options
<b>Performance</b>	Weather tested in accordance with BS6375 Pts 1 & 2* Security tested to BS7950* Complies with Doc. L for thermal transmittance *BSI Kitemark Test Reports are available on request





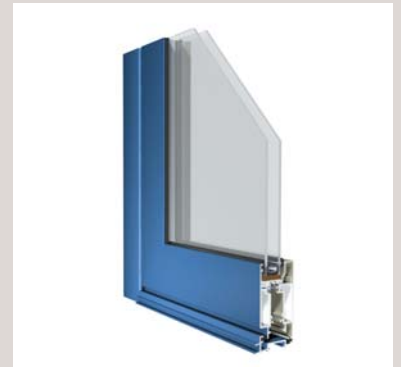
Smart Systems offer a range of doors suitable for the architectural, commercial, public, new build and retail markets. The doors available are commercial hinged, commercial swing, patio, tilt and slide, slide folding, multi-track slide and automatic. Our doors are designed for use as open out or open in, single or double doors, internally or externally beaded with side-light options for domestic and/or commercial applications. Doors are available with polyamide thermal barrier or as aluminium/PVC-U composite frames for high performance thermal efficiency.

High security glazing, locking mechanisms including security deadlock and hook bolts, dual colour options, excellent weather performance (BS6375 Pt 1) are some of the many special features of our door systems.

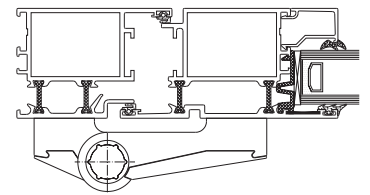


# DOORS

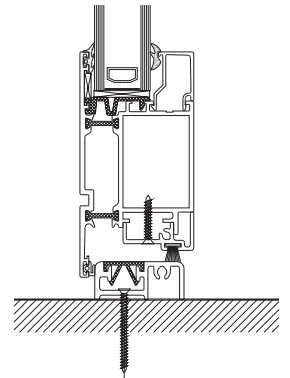
## Visoline



Horizontal Section



Vertical Section



### Trade Name

## Visoline

### Building applications

Designed for use as open out or open in, single or double doors, Internally beaded with side-light options for domestic and Light/medium commercial applications.

Single door - Max width 950mm. Max height 2400mm

Double door - Max width 1800mm. Max height 2400mm

Subject to agreement it is possible to exceed these limitations depending on design criteria

### Special features

All applications are internally glazed with square or round edge beads

Polyamide thermal break allowing dual colour option

### Materials

Aluminium alloy 6060/6063 T5/T6 in condition F22 to NBN P21-001 and DIN 1725

Thermal break: polyamide strips PA 6.6. 25% reinforced with glass fibre

Seals: EPDM to DIN 7863, TV 110 NFP 85301, ISO 3994

### Finish

Polyester powder coat to BS 6496/APA-Qualicoat Guidelines.

Anodised satin or bronze colours with

EWAA/EURAS-Qualinod quality label

Dual colour available

### Profile width

Various options depending on design considerations

### Depth of frame

51mm

### Glass

Glazing options from 4mm to 38mm

### Sash inserts

Allows for fully framed or low threshold door sashes

### Performance

Weather tested in accordance with BS6375 Pts 1

Tested to NEN-norm 5096. Security tested by SKG

Complies with Doc. L for thermal transmittance

Test Report available on request





Our doors are compatible with a range of furniture and locking mechanisms and are available in a wide range of colours and finishes that comply with all relevant British and/or European standards. Compliance with Document L for thermal transmittance applies.

Design flexibility, durability and fitness for purpose are key factors that project managers, architects and specifiers will discover when they opt for our commercial doors – whether required for refurbishment or new build projects Smart's doors are designed for rigorous use and heavy traffic.

Test Reports are available on request

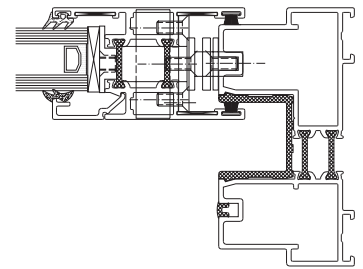


# DOORS

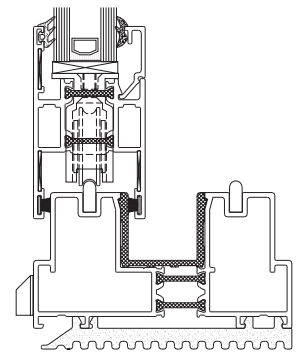
## Visoglide



Horizontal Section



Vertical Section



### Trade Name

## Visoglide

### Building applications

Designed for use as fixed lights and horizontal sliding doors internally beaded for domestic and all commercial applications

### Special features

Weight limit 200Kg. Height limit 2550mm  
2, 3, 4 and 6 door panels available  
All applications are internally glazed with square beads  
Polyamide thermal break allowing dual colour option

### Materials

Aluminium alloy 6060/6063 T5/T6 in condition F22 to NBN P21-001 and DIN 1725

Thermal break: polyamide strips PA 6.6. 25% reinforced with glass fibre

Glazing seals: EPDM to DIN 7863, TV 110 NFP 85301, ISO 3994

Weatherseals: Woolpile

### Finish

Polyester powder coat to BS 6496/APA-Qualicoat Guidelines. Anodised satin or bronze colours with EWAA/EURAS-Qualinod quality label  
Dual colour available

### Profile width

Head, cill and jamb 116mm  
Mullion 83mm and bi-parting stiles 158mm

### Depth of frame

Two track 99mm and three track 155mm

### Glass

Glazing options from 4mm to 28mm

### Sash inserts

Fixed lights and horizontal sliding panels

### Performance

Weather tested in accordance with BS6375 Pts 1  
Tested to NEN-norm 5096. Security tested by SKG  
Complies with Doc. L for thermal transmittance  
Test Reports are available on request





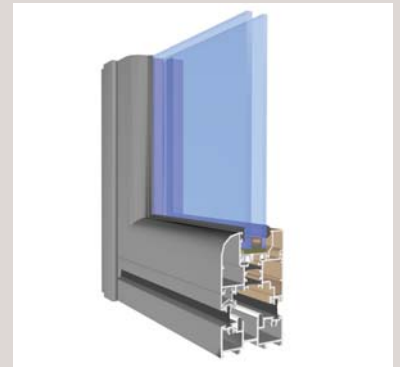
Our Visofold folding doors are constructed from profiles with a thermal break. Robust sections enable the creation of large passage-ways providing maximum natural light and panoramic views. Moveable panels that can be folded up to the left or right sit within an outerframe. The system offers flexibility in terms of the possible combinations of folding elements and opening sashes.

This door system can be used in a variety of properties including private domestic dwellings, conservatories, hotels, restaurants and stores to open up a complete wall to create a larger space particularly advantageous in the summer.

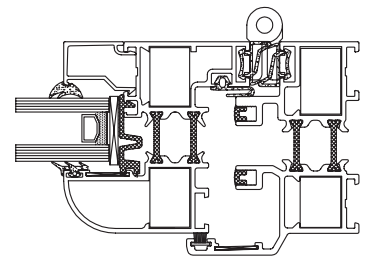


# DOORS

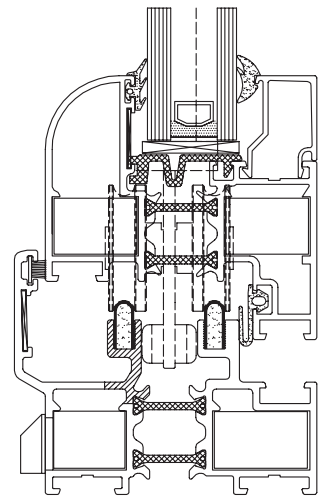
## Visofold



Horizontal Section



Vertical Section



### Trade Name

## Visofold

### Building applications

Designed for use as doors for single/double (open in or out), sliding and folding screens (open in or out) internally beaded for use in domestic dwellings, as a screen in conservatories and on all commercial applications e.g. hotels, restaurants, and stores

### Special features

All applications are internally glazed with square or round edge beads. Polyamide thermal break allowing dual colour option

### Materials

Aluminium alloy 6060/6063 T5/T6 in condition F22 to NBN P21-001 and DIN 1725

Thermal break: polyamide strips PA 6.6. 25% reinforced with glass fibre

Glazing seals: EPDM to DIN 7863, TV 110 NFP 85301, ISO 3994.

Weather seals: Woolpile and EPDM

### Finish

Polyester powder coat to BS 6496/APA-Qualicoat Guidelines. Anodised satin or bronze colours with EWAA/EURAS-Qualinod quality label. Dual colour available. Wood-effect colour available (powder coated according to Qualicoat).

### Profile width

Various options depending on design considerations

### Depth of frame

Outerframe 78mm, Sash 70mm

### Glass

Glazing options from 4mm to 38mm

### Sash inserts

Visoline window types

### Weather performance

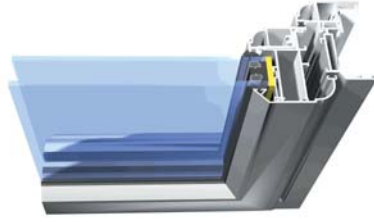
Tests conducted in accordance with STS 52.0. Complies with Doc. L for thermal transmittance

Test Report available on request



# TECHNICAL SPECIFICATIONS

## Duotherm Window



Designed for use as fixed lights, tilt and turn, fully reversible side or top hung open out windows, internally or externally beaded for domestic and light/medium commercial applications.

Designed for high thermal efficiency – Structural aluminium sections are clad internally with PVC-U profiles. Ovolo, chamfered or square main profile options  
High security glazing and shoot-bolt locking

Aluminium alloy 6060/6063 T5/T6 to comply with BS EN 12020-2: 2001/BS7599-9: 2001

Internal PVC-U window grade profile to BS7413

Glazing and weatherseals comply with BS4255 and BS4255 Pt 1

Polyester powder coat paint finish to BS 6496. Dual colour available. Standard RAL colours supplied. Anodised finish AA25 to BS3987. Woodgrain finishes in mahogany and light oak

Various options depending on design considerations

51mm and 70mm

Glazing options 20mm, 24mm, 28mm or 32mm

Top or side hung opening, tilt and turn and top swing fully reversible options

Weather tested in accordance with BS6375 Pt 1  
Complies with Doc. L for thermal transmittance  
Test Reports are available on request

## Duotherm Door



Designed for use as open out or open in, single or double doors, internally or externally beaded with side-light options for domestic and light/medium commercial applications.

Single door - Max width 914mm. Max height 2400mm  
Double door - Max width 1800mm. Max height 2400mm  
Subject to agreement it is possible to exceed these limitations depending on design criteria

Designed for high thermal efficiency – Structural aluminium sections are clad internally with PVC-U profiles. Ovolo, chamfered or square main profile options  
High security glazing and three point locking

Aluminium alloy 6060/6063 T5/T6 to comply with BS EN 12020-2: 2001/BS7599-9: 2001

Internal PVC-U window grade profile to BS7413

Glazing and weatherseals comply with BS4255 and BS4255 Pt 1

Polyester powder coat paint finish to BS 6496. Dual colour available. Standard RAL colours supplied. Anodised finish AA25 to BS3987. Woodgrain finishes in mahogany and light oak

Various options depending on design considerations

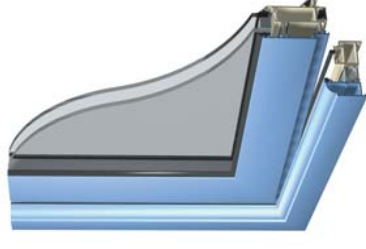
70mm

24mm

Allows for fully framed or low threshold door sashes

Complies with Doc. L for thermal transmittance  
Test Report available on request

## Altherm Door



Designed for use as open out or open in, single or double doors, internally or externally beaded with side-light options for domestic and light/medium commercial applications.

Single door - Max width 900mm. Max height 2400mm  
Double door - Max width 1800mm. Max height 2400mm  
Subject to agreement it is possible to exceed these limitations depending on design criteria

Polyamide thermal break allowing dual colour option

Aluminium alloy 6060/6063 T5/T6 in condition F22 to NBN P21-001 and DIN 1725

Thermal break: polyamide strips PA 6.6. 25% reinforced with glass fibre

Seals: EPDM to DIN 7863, TV 110  
NFP 85301, ISO 3994

Polyester powder coat to BS 6496/APA-Qualicoat Guidelines. Anodised satin or bronze colours with EWAA/EURAS-Qualinod quality label  
Dual colour available

Various options depending on design considerations

47mm or 70mm

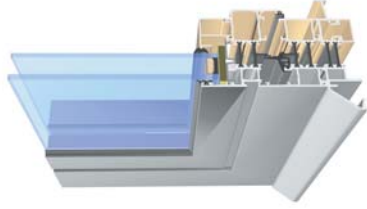
Glazing options 24mm, 28mm and 32mm

Allows for fully framed or low threshold door sashes

Successfully tested to PAS standard  
Weather tested in accordance with BS6375 Pt 1  
Complies with Doc. L for thermal transmittance  
Test Report available on request



## Imperial Window



Designed for use as fixed lights, tilt and turn, single or double sash, side hung (open in/out), tilt in, side or top hung (open out), horizontal or vertical pivot and tilt and slide windows. All options are internally beaded for use on domestic and all commercial applications. Doors are also available as part of this range.

All applications are internally glazed with square or round edge beads. Polyamide thermal break allowing dual colour option. Profiles span full height i.e. floor to ceiling.

Aluminium alloy 6060/6063 T5/T6 in condition F22 to NBN P21-001 and DIN 1725  
Thermal break: polyamide strips PA 6.6. 25% reinforced with glass fibre  
Seals: EPDM to DIN 7863, TV 110  
NFP 85301, ISO 3994

Polyester powder coat to BS 6496/APA-Qualicoat Guidelines. Anodised satin or bronze colours with EWAA/EURAS-Qualinod quality label. Dual colour available.

Various options depending on design considerations.

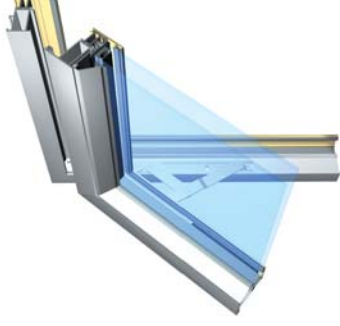
65mm

Glazing options: from 4mm to 51mm

See "Building Applications" above

Weather tested in accordance with BS6375 Pt 1 Tested to NEN-norm 5096. Security tested by SKG. Complies with Doc. L for thermal transmittance. Test Reports are available on request.

## Intruder Window



Designed for use as fixed lights, top or side hung, open out windows, externally beaded for domestic and all commercial applications.

Polyamide thermal break allowing dual colour option.

Aluminium alloy 6060/6063 T5/T6 in condition F22 to NBN P21-001 and DIN 1725  
Thermal break: polyamide strips PA 6.6. 25% reinforced with glass fibre  
Seals: EPDM to DIN 7863, TV 110  
NFP 85301, ISO 3994

Polyester powder coat to BS 6496/APA-Qualicoat Guidelines. Anodised satin or bronze colours with EWAA/EURAS-Qualinod quality label. Dual colour available.

Various options depending on design considerations.

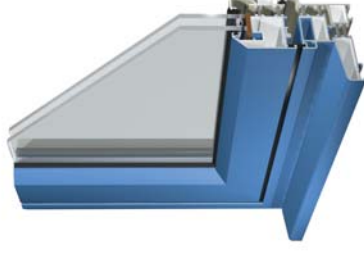
51mm and 70mm

Glazing options from 4mm to 8mm single glazed and 17mm to 32mm double glazed.

See "Building Applications" above

Weather tested in accordance with BS6375 Pts 1 Security tested to BS7950. Complies with Doc. L for thermal transmittance. Test Reports are available on request.

## Reversible Window



Designed for use as fixed lights, and open out top swing reversible windows. Internal beading to vent with the option of internal/external beaded fixed light. For use on domestic and light/medium commercial applications.

Polyamide thermal break allowing dual colour option.

Aluminium alloy 6060/6063 T5/T6 in condition F22 to NBN P21-001 and DIN 1725  
Thermal break: polyamide strips PA 6.6. 25% reinforced with glass fibre  
Seals: EPDM to DIN 7863, TV 110  
NFP 85301, ISO 3994

Polyester powder coat to BS 6496/APA-Qualicoat Guidelines. Anodised satin or bronze colours with EWAA/EURAS-Qualinod quality label. Dual colour available.

Various options depending on design considerations.

51mm

Glazing options from 18mm to 28mm

Reversible sash

Weather tested in accordance with BS6375 Pt 1 Security tested to BS7950. Complies with Doc. L for thermal transmittance. Test Reports are available on request.

## Building applications

## Special features

## Materials

## Finish

## Profile width

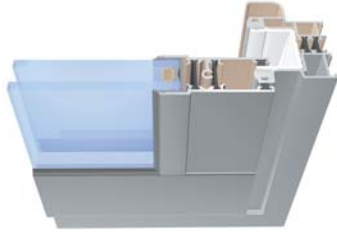
## Depth of frame

## Glass

## Sash inserts

## Performance

## Slide Window



Designed for use as fixed lights, horizontal sliding windows and doors, wrap around glazing, for domestic and light/medium commercial applications

Max glass load 120Kg/sliding panel

2, 3, 4 and 6 door panels available  
Polyamide thermal break allowing dual colour option  
Single through to four point locking available

Aluminium alloy 6060/6063 T5/T6 in condition F22 to NBN P21-001 and DIN 1725

Thermal break: polyamide strips PA 6.6. 25% reinforced with glass fibre

Glazing seals: EPDM to DIN 7863, TV 110 NFP 85301, ISO 3994.  
Weatherseals: Woolpile

Polyester powder coat to BS 6496/APA-Qualicoat Guidelines.  
Anodised satin or bronze colours with EWAA/EURAS-Qualinod quality label  
Dual colour available

Various options depending on design considerations

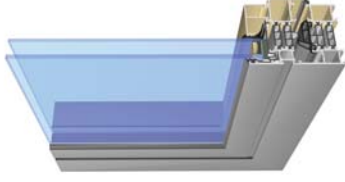
Various options depending on design considerations

Glazing options from 6mm to 9mm single glazed  
And double glazed from 20mm to 24mm

Horizontal sliding panels only

Tested to NEN-norm 5096. Security tested by SKG  
Complies with Doc. L for thermal transmittance  
Test Reports are available on request

## Superial Window



Designed to separate terrace areas and living quarters in houses and flats. Provides separations for conservatories looking out onto the garden and also creates space in passage-ways.

Thermal break system that provides a high degree of acoustic and thermal insulation.

Aluminium Alloy 6060/6063 T5 in condition F22 (according to NBN P21-001 and DIN 1725)

Sealings: EPDM according to DIN 7863, TV 110, NFP 85301, ISO 3994

Thermal break: polyamide strips PA 6.6.25% reinforced with glass fibre

Polyester powder coat to BS 6496/APA-Qualicoat Guidelines.  
Anodised satin or bronze colours with EWAA/EURAS-Qualinod quality label.  
Dual colour available.  
Wood-effect colour available (powder coated according to Qualicoat)

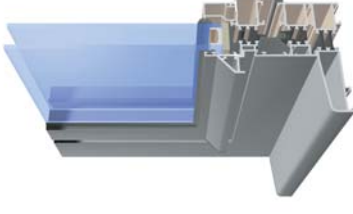
Various options depending on design considerations

Outer frame 75 mm, sash 84 mm

Glazing from 21 up to 61 mm

Tests conducted in accordance with STS 52.0  
Complies with Doc. L for thermal transmittance  
Test Report available on request

## Triiline Window



Designed for use as fixed lights, tilt and turn, single or double sash, side hung (open in/out), tilt in, side or top hung (open out), horizontal or vertical pivot and tilt and slide windows. All options are internally beaded for use on domestic and all commercial applications

All applications are internally glazed with square or round edge beads  
Polyamide thermal break allowing dual colour option  
Profiles span full height i.e. floor to ceiling

Aluminium alloy 6060/6063 T5/T6 in condition F22 to NBN P21-001 and DIN 1725

Thermal break: polyamide strips PA 6.6. 25% reinforced with glass fibre

Seals: EPDM to DIN 7863, TV 110 NFP 85301, ISO 3994

Polyester powder coat to BS 6496/APA-Qualicoat Guidelines.  
Anodised satin or bronze colours with EWAA/EURAS-Qualinod quality label  
Dual colour available

Various options depending on design considerations

51mm

Glazing options from 4mm to 38mm

See "Building Applications" above

Tested to NEN-norm 5096. Security tested by SKG  
Complies with Doc. L for thermal transmittance  
Test Reports are available on request

## Building applications

## Special features

## Materials

## Finish

## Profile width

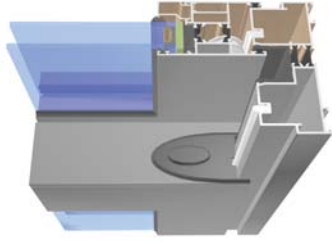
## Depth of frame

## Glass

## Sash inserts

## Performance

## Superglide Door



Designed to separate terrace areas and living quarters in houses and flats. Provides separations for conservatories looking out onto the garden and also creates space in passage-ways.

Thermal break system for patio doors (2, 3, 4 & 6 pane) and windows with thermal break

Aluminium Alloy 6060/6063 T5 in condition F22 (according to NBN P21-001 and DIN 1725)

Sealings: EPDM according to DIN 7863, TV 110, NFP 85301, ISO 3994

Thermal break: polyamide strips PA 6.6.25% reinforced with glass fibre

Polyester powder coat to BS 6496/APA-Qualicoat Guidelines. Anodised satin or bronze colours with EWAA/EURAS-Qualinod quality label. Dual colour available. Wood-effect colour available (powder coated according to Qualicoat)

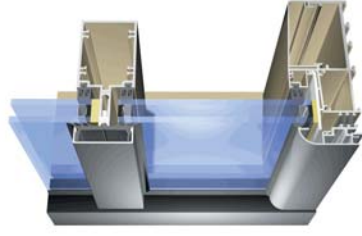
Various options depending on design considerations

Outer frame 116 mm

Glazing from 4 to 38 mm

Tests conducted in accordance with STS 52.0  
Complies with Doc. L for thermal transmittance  
Test Report available on request

## SC Frame



Suitable for low to medium rise façades including large shopfronts and showrooms, where ease of installing large panes of glass is a pre-requisite.

Constructed in ladder frames in the factory allowing rapid on-site installation. Stainless steel self-tapping screws are used through the mullion into integral cores within the transom or a cleating method can be used for manufacture

Aluminium alloy 6060/6063 T5/T6 in condition F22 to NBN P21-001 and DIN 1725

Thermal break and seals: EPDM to DIN 7863, TV 110 NFP 85301, ISO 3994

Polyester powder coat to BS 6496/APA-Qualicoat Guidelines. Anodised satin or bronze colours with EWAA/EURAS-Qualinod quality label. Dual colour available

55mm

7.5mm, 100mm and 125mm

Single glazing 6mm, 10mm and 12mm and double glazing 24mm, 28mm and 32mm

Accommodates Smarts Intruder, Alitherm, Visoline and Slide Windows and Doors.

Complies with Doc. L for thermal transmittance

We reserve the right to make changes to the product specification as technical developments dictate and without prior notice.

Pictures shown in this brochure are for illustrative purposes only and are not binding in detail, colour or specification.

Alitherm, Duootherm, Imperial, Intruder, MC Wall, SC Frame, Shopline, Slide, Triline, Visofold, Visoglide and Visoline are trademarks of Smart Systems Ltd.  
© Smart Systems Ltd 2009

## Building applications

## Special features

## Materials

## Finish

## Profile width

## Depth of frame

## Glass

## Sash inserts

## Performance

